

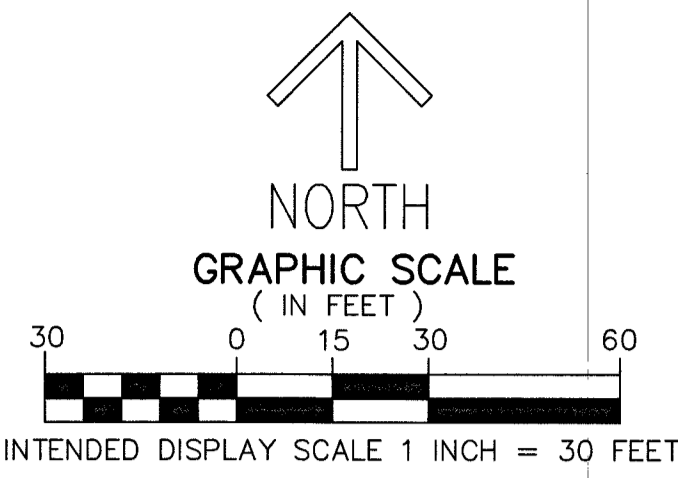
MORE SPACE STORAGE-BOYNTON BEACH

A PORTION OF SECTION 1, TOWNSHIP 46 SOUTH, RANGE 42 EAST, PALM BEACH COUNTY, FLORIDA,
LYING IN SECTION 1, TOWNSHIP 46 SOUTH, RANGE 42 EAST, PALM BEACH COUNTY, FLORIDA.

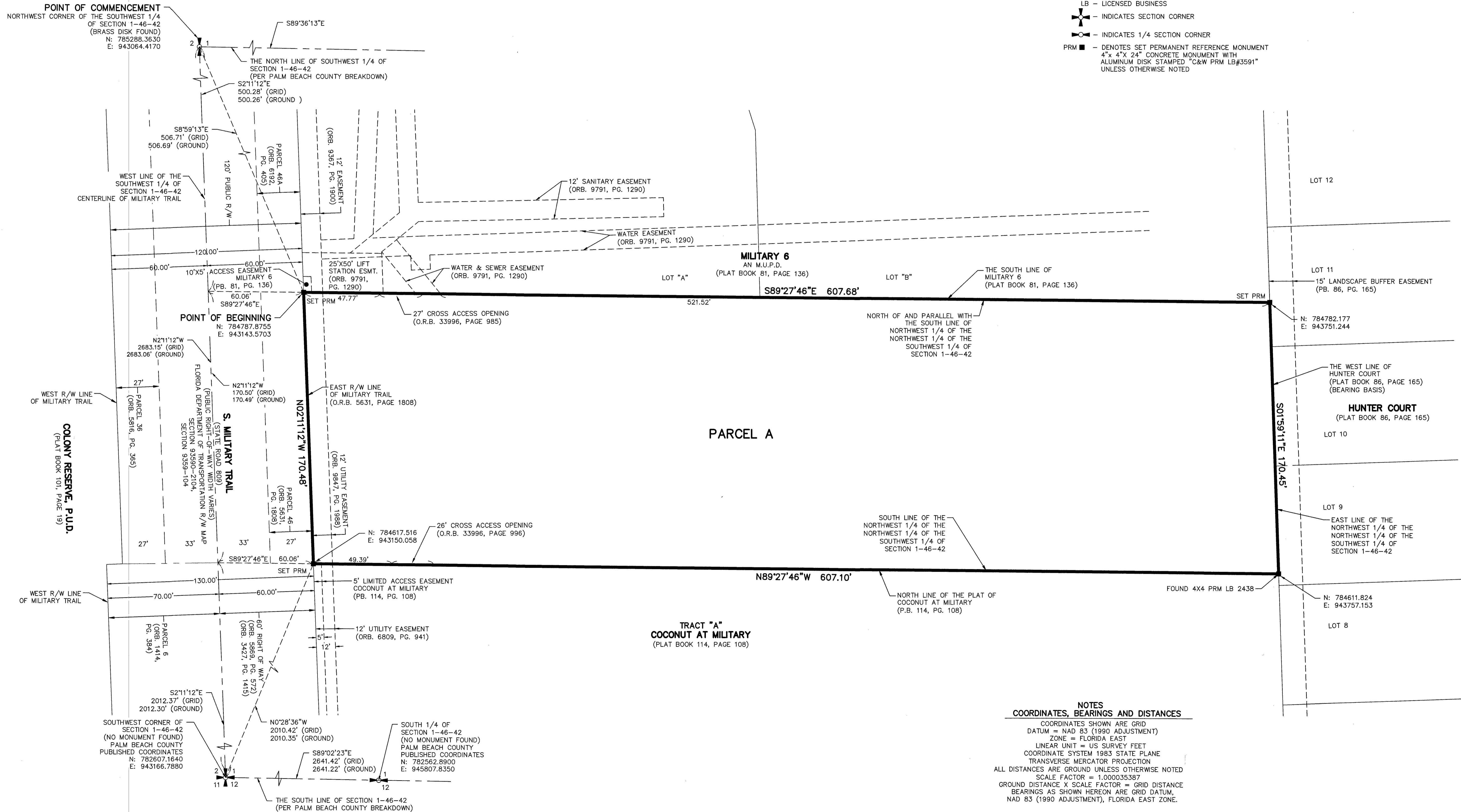
THIS INSTRUMENT PREPARED BY
DAVID P. LINDLEY
OF
CAULFIELD and WHEELER, INC.
SURVEYORS - ENGINEERS - PLANNERS
7900 GLADES ROAD, SUITE 100
BOCA RATON, FLORIDA 33434 - (561)392-1991
CERTIFICATE OF AUTHORIZATION NO. LB3591

16

SHEET 2 OF 2



- LEGEND/ABBREVIATIONS**
- CL - CENTERLINE
 - E - EASTING (WHEN USED WITH COORDINATES)
 - N - NORTHING (WHEN USED WITH COORDINATES)
 - P.B. OR PB. - PLAT BOOK
 - PG(S). - PAGE(S)
 - M.U.P.D. - MIXED USE PLANNED DEVELOPMENT
 - ORB. OR O.R.B. - OFFICIAL RECORD BOOK
 - P.U.D. - PLANNED UNIT DEVELOPMENT
 - R/W - RIGHT-OF-WAY
 - 1-46-42 - SECTION 1, TOWNSHIP 46 SOUTH, RANGE 42 EAST
 - ESMT. - EASEMENT
 - LB - LICENSED BUSINESS
 - ✚ - INDICATES SECTION CORNER
 - ⊙ - INDICATES 1/4 SECTION CORNER
 - PRM ■ - DENOTES SET PERMANENT REFERENCE MONUMENT
4" x 4" x 24" CONCRETE MONUMENT WITH ALUMINUM DISK STAMPED "C&W PRM LB#3591" UNLESS OTHERWISE NOTED



NOTES
COORDINATES, BEARINGS AND DISTANCES

COORDINATES SHOWN ARE GRID
 DATUM = NAD 83 (1990 ADJUSTMENT)
 ZONE = FLORIDA EAST
 LINEAR UNIT = US SURVEY FEET
 COORDINATE SYSTEM 1983 STATE PLANE
 TRANSVERSE MERCATOR PROJECTION

ALL DISTANCES ARE GROUND UNLESS OTHERWISE NOTED
 SCALE FACTOR = 1.000035387
 GROUND DISTANCE X SCALE FACTOR = GRID DISTANCE
 BEARINGS AS SHOWN HEREON ARE GRID DATUM,
 NAD 83 (1990 ADJUSTMENT), FLORIDA EAST ZONE.